



TRANSFORMING OUR FUTURE

- ✓ Near 100% solar powered
- ✓ Near zero emissions
- ✓ Carbon neutral operation
- ✓ Rain harvesting & water recycling
- ✓ Reduced servicing requirements
- ✓ 100% renewable energy sources
- ✓ Minimal fuel consumption
- ✓ Low operational costs
- ✓ High end of life recyclability
- ✓ Lifespan exceeds competitors' by at least 50%



Rain and grey water recycling



Anti-vandal doors with 3-bolt locking system



VCA Type Approval under Directive 2007/46/EC



Instant hot water hand wash in canteen and toilet



High quality build gives longer lifespan



Reduced generator servicing or breakdowns



Safe long-lasting lithium ion batteries



Remote monitoring of energy



Ultra efficient electrical system



Near zero emissions all year round



Meets all HSE and CDM site welfare standards



Can be powered by external electricity supply



Ultra low-fuel HVO heating system

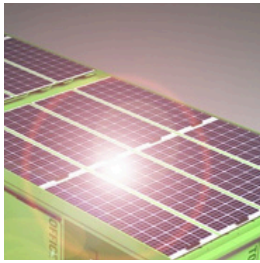
enquiries@groundshore.co.uk

+44 (0)333 5779111

groundshore.co.uk

HIGH PERFORMANCE PLANET FRIENDLY

Our flagship solar-powered Deep Green welfare ranges provides a proven effective way for worksites to lower fuel use, minimise CO2 emissions and cut servicing requirements. Patented technology and innovations help welfare owners and users achieve Net Zero, ESG and other sustainability targets by lowering the carbon footprint associated with traditional diesel-powered welfare operation.



100% SOLAR ELECTRICS

With roof and side solar panels, 100% of electrical power is supplied by solar/battery virtually all year round. A 3.5kVA generator is there as back up.



LOW GENERATOR COSTS

Generator servicing and repairs are almost eliminated as generator use is minimal. Statistically generator faults account for 85% of all callouts.



NEAR ZERO EMISSIONS

. With the generator only running in an emergency to recharge battery if required and with the heater using only 0.25 litres of fuel per hour, virtually zero emissions are achieved.



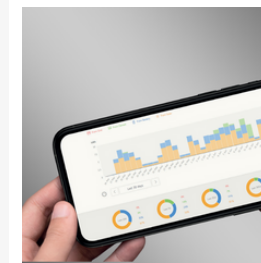
SILENT OPERATION

Keep workers & site neighbours happy. with almost 100% noise free operation. Staff will enjoy peaceful canteen breaks and uninterrupted office work.



FINANCIAL SAVINGS

Huge cut in fuel and servicing costs compared to standard 'eco' cabin, Data verified by Carbon Footprint (see individual cabins for projected savings)



REMOTE MONITORING

24/7 remote access online to all system information. Location, weather, energy use & production, tank levels & fault reporting. Email alerts sent.



TRANSPARENT REPORTS

Using manufacturer's own design software, it's quick and easy to report on fuel, emission and servicing savings for ESG, Net Zero and other sustainability reports



ENERGY SAVING

Highly efficient electrical system employs intelligent technology to use the minimum energy while providing full functionality.



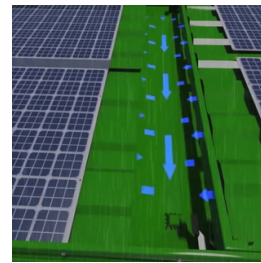
CLEAN AIR ZONE COMPATIBLE

All Deep Green welfare is suitable for use wherever emissions are limited such as ULEZ and other Clean Air zones



NO FOSSIL FUELS REQUIRED

Combination of solar-powered electrics and HVO use in heater and generator means only clean renewable energy is used



RAIN HARVESTING

Patented rain harvesting and grey water recycling system plus water saving measures cut toilet pump out visits by average 66%.



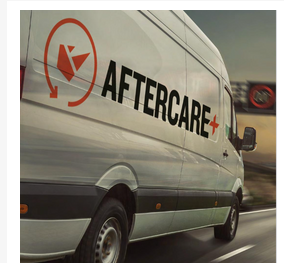
SUSTAINABLE BUILD

100% full mild steel build. Market-recognised superior build quality. Waste is reduced as high build quality means a longer cabin life



RECYCLABLE

Use of recyclable materials where possible to ensure minimal end-of-life environmental impact. 97.2% recyclable.



DEDICATED SUPPORT

Comprehensive aftercare service – a fleet of nationwide engineers, training packages plus attentive phone and online support.

DEEP GREEN ULTRA WELFARE

SITE FRIENDLY



EXTERIOR FLOODLIGHTS

PIR-sensor exterior floodlights with dusk-to-dawn operation improve safety and security



SIMPLE TO OPERATE

Automatic electrical system start/stop via PIR-sensor. Walk in and start using appliances as you would at home. No need to turn off electrics or heat when leaving cabin

FULLY EQUIPPED CANTEEN

Instant hot water, drinking water, microwave, kettle and option of fridge or cool box.



EASY CLEAN

Brilliant white GRP internal walls with easy-to-maintain wipe-down finish



EASY TO DEPLOY

Electric-hydraulic system deploys in under a minute by one person



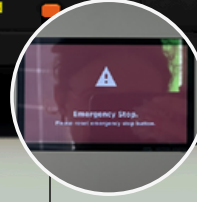
POWER ON DEMAND

24V USB charge points and 230V 3-pin power sockets



TOP QUALITY FINISH

Catering-grade stainless steel kitchen surfaces plus brushed steel electrical fittings throughout



AVOID CALLOUTS

On-board control panel gives early warning of any issues and advice on how to rectify them, avoiding needless service calls.



REDUCED SERVICING

Remote monitoring and auto-alerts means service visits can be planned precisely - no wasted visits



MAGNETIC DOOR STAYS

Avoid accidental injuries and cabin damage



INTEGRAL ROAD LIGHTS

Surface-mounted LED road lights for ease of use. Just slide in the number plate and go

- REMOTE TELEMETRY
- RAINWATER HARVESTING
- SILENT RUNNING



SUSTAINABLE WELFARE HIRE

- 100% RENEWABLE ENERGY
- CARBON NEUTRAL
- SOLAR POWERED

ROOM TO CHANGE

Single toilet and full drying/changing room with plenty of space to hang wet clothes



WATER SAVING

Micro flush toilets only use 0.5 litre per flush, 90% less than standard.



SOLARFlow™

ULTRA EFFICIENT SOLAR-POWERED ELECTRICS

Deep Green units combine maximum solar energy harvesting capacity with an ultra-efficient electrical system that minimises energy use so effectively that all electrics can be powered by solar year-round. The back-up generator will rarely be required even during winter months.

All electrical operations run off solar or battery power alone. The system is intuitive and easy-to-use – electrics are PIR-sensor controlled and instantly available whenever the cabin is occupied with no need to press a button or start a generator. The system works in tandem with the integrated SOLARTrack™ VRM remote monitoring system to optimise your cabin's performance at all times

- Simple to operate - almost all functions are controlled via the Control Screen in the Canteen
- High-performance roof and vertical solar panel arrays – 315W per panel.
- Solar energy stored in high-capacity longlife 5.12kWh lithium ion batteries
- Near zero emission operation
- In winter months, ultra low-consumption diesel heating system uses just 0.25 litres of fuel per hour with minimal emissions – use HVO for net zero operation
- Our team of experts can monitor data and help users set functional parameters remotely to optimise cabin performance at all times

SOLARTrack™

DATA AT YOUR FINGERTIPS

A VRM system offers 24/7 remote access to real-time and historical data on your cabin's operational status via WiFi or 3G/4G/5G internet connection. Energy consumption and production, battery charge status, location, weather, tank levels and much more.

Allows cabin owners to set alarms, change functional parameters, monitor energy production/consumption, track fuel use, view waste/water/fuel tank levels, track and remedy faults. Data is recorded and stored, meaning carbon savings can be reported easily and accurately. Data accessed remotely via WiFi or 3G/4G & 5G internet connection. An on-board control panel is also available with key data plus system warnings and solution advice.

- Easily generate fuel, CO2, servicing and cost savings reports for ESG, Net Zero and other targets with bespoke software tools
- Email alerts and an on-board control panel flag up system faults - allowing early detection, diagnosis and resolution, avoiding most site visits
- Set alarms for waste, water and fuel tank levels
- Only service when necessary – save time and money
- Option of remote shutdown



RAIN HARVESTING & GREY WATER RECYCLING

Our Deep Green welfare cabins use an exclusive patented system to reduce significantly the amount of water needed to operate and the amount of toilet waste produced.

By clever use of rain-water harvesting and grey-water recycling, this system benefits both the environment and the user. With far less wastewater produced and less water needed, the interval between services increases dramatically meaning big savings in fuel, time and cash. Where toilets are traditionally serviced weekly, this interval can easily stretch to 3 or even 4 weeks.

HERE'S HOW IT WORKS:

1. Rainwater is captured then sieved for large debris and stored in a tank.
2. The rainwater is passed through a UV filter to sterilise it before being heated and used for washing hands.
3. Water from the sink is transferred to a grey water tank.
4. Water from the grey water tank is used to flush the toilet.

DEEP GREEN ULTRA FEATURES AND BENEFITS

SUSTAINABLE

- Highly efficient 315W solar panels cover the roof and walls
- Energy stored in a large capacity long life 5.12 kWh lithium-ion battery
- Battery insulated plus heat pads to ensure prime function year-round
- Ultra-low consumption diesel heater uses only 0.25 litres of fuel p/hour with minimal emissions. Use HVO in heater to lower CO2 by a further 90%.
- SOLARTrack™ VRM system gives remote access 24/7 to data on energy consumption, production, battery charge status, tank levels and location.
- Our team of experts can help monitor data and help users set parameters remotely to optimise cabin performance at all times.
- An exclusive online system makes reporting fuel, CO₂ and servicing savings for ESG, Net Zero and other sustainability reports easy.
- Full mild steel build.
- Minimal generator servicing or repairs - eliminates most engineer site visits so fewer vehicle emissions and fuel use.
- UV water sterilisation system – chemical-free and low-energy operation
- Patented WMPPro™ waste system harvests rain water then recycles grey water to flush toilets cutting servicing by approx. 66%
- Freshwater toilets cut chemical usage
- Microflush toilets use as little as 0,5l per flush, water saving of 91%
- Low-power hands-free electric hand dryers – saves paper waste

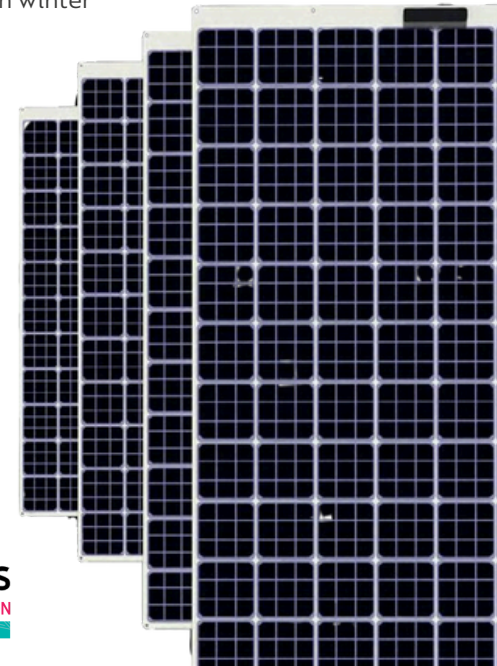
EASE OF USE

- Automatic electrical system start/stop via PIR-sensor. No need to turn off cabin electrics or heat when leaving the cabin.
- On-board control panel gives early warning of any issues and advice on how to rectify them, avoiding needless service calls.
- Cabin deploys in under a minute by one person with electric hydraulics. 4-ram system means no displacement in cabin during deployment.
- Surface-mounted LED road lights for ease of use. Just slide in the number plate and go.
- PIR-sensor 24V LED lighting interior and exterior.
- Instant hot water in the canteen and toilets
- Foot-operated hands-free flush

SECURITY & SAFETY

- To combat theft, hydraulics are activated from control screen in canteen so hydraulics cannot be 'hot-wired' from outside.
- Full steel anti-vandal build with 3-bolt locking doors and security shutters
- Low-level lifting points avoid 'Working at Height' issues.
- Removable lifting eyes combat the risk of theft.
- Optimally balanced for easy towing.
- All electrical systems are certified 100% compliant with UK legislation BS7671 18th Edition.
- 'Frost-free' system installed to ensure pipes and taps do not freeze in winter

DEEP GREEN | GENFREE™ AWARDS & SHORTLISTS



Rain and grey water recycling



Anti-vandal doors with 3-bolt locking system



VCA Type Approval under Directive 2007/46/EC



Instant hot water hand wash in canteen and toilet



High quality build gives longer lifespan



Reduced generator servicing or breakdowns



Safe long-lasting lithium ion batteries



Remote monitoring of energy



Ultra efficient electrical system



Near zero emissions all year round



Meets all HSE and CDM site welfare standards



Can be powered by external electricity supply

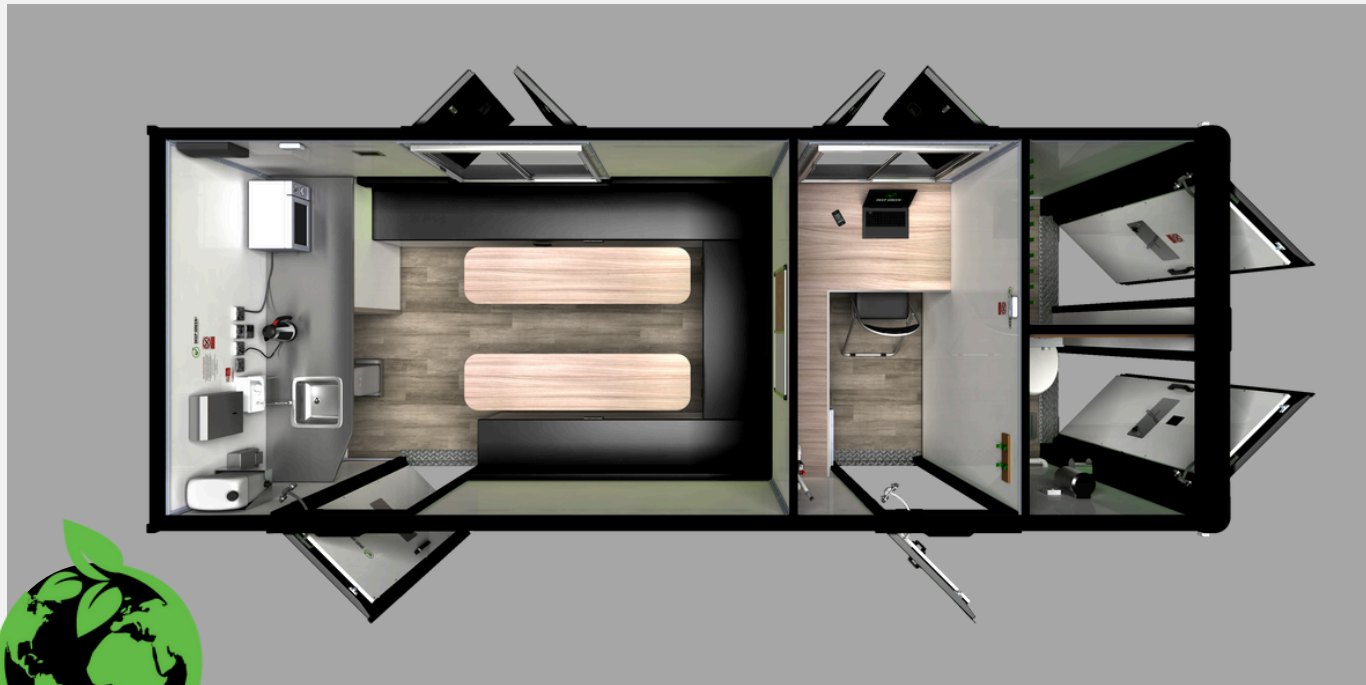


Ultra low-fuel HVO heating system

CANTEEN OFFICE 20 DEEP GREEN ULTRA

 UP TO 14 USERS

TYPE	ROAD TOWABLE - EASY AND ECONOMICAL TO TRANSPORT	
AXLE RATING	DOUBLE AXLE - 2 x 1800KG	
DEPLOYMENT	ELECTRIC HYDRAULIC DEPLOYMENT WITH 4 RAMS	
TOW HITCH	BALL HITCH. ANTI-VANDAL FLAP COVER WITH BEAR-CLAW LOCK	
GENERATOR	REDBOX 2.3 kVA ENGINE: Yanmar L48 ALTERNATOR: Mecc Alte E516WHD-75 SERVICE INTERVAL: 250 hours.	
ELECTRICS	DEEP GREEN ULTRA SOLARFLOW™ ELECTRICAL SPECIFICATION WITH :	
	6 x 315W roof-mounted solar panels	6 x 315W wall-mounted vertical solar panels
	5.12kW/h lithium ion battery	Hands-free low power electric hand dryers
	Automatic PIR-sensor controlled start/stop function	Interior and exterior PIR-sensor 24V LED lighting
	24V USB charging power outlets	500W 230V 3-pin sockets
HEATING	ULTRA LOW CONSUMPTION 24V AIR-BLOWN HEATER USES 0.25L PER HOUR. HVO OR WHITE DIESEL POWERED	
TELEMETRY	SOLARTRACK™ VRM SYSTEM MONITORS LOCATION, BATTERY, ENERGY PRODUCTION/CONSUMPTION, WASTE, WATER, FUEL TANKS. SET ALARMS, AMEND PARAMETERS AND CREATE REPORTS REMOTELY.	
WASTE MANAGEMENT SYSTEM	WM PRO™ – PATENTED RAIN HARVESTING AND GREY WATER RECYCLING	
TOILET TYPE	FRESH WATER MICRO FLUSH. SINGLE TOILET AND FULL DRYING/CHANGING ROOM	



TRANSFORMING
OUR FUTURE

enquiries@groundshore.co.uk

+44 (0)333 5779111

TOTAL ANNUAL SAVINGS



£11,733

Total savings



£7,097

Direct fuel costs avoided



3,140L

Total litres fuel saved



£2,204

Generator service costs saved



9,944kg

CO2 emissions avoided



£2,340

Toilet servicing costs avoided

*Compared to standard comparable 'eco' Canteen Office unit with fresh water toilet(s) and 7kVA generator 5 day/week. CO2 emissions calculation: 1l of fuel = 3.16 kg of CO2 (inc. Scope 3). HVO biofuel - £2.15L. Generator service £280. Toilet service £70.

Attribute	Measurement
Unit Length	6060mm
Unit Width	2300mm
Unit Height	2630mm
Towing length	7502mm
Towing Height	2900mm
Net weight	3000kg
Fresh Water Tank	250 litres
Waste Tank	327 litres
Fuel Tank	50 litres



*Fuel, CO2 emission and servicing savings tested and verified on a 24ft Deep Green Canteen Office cabin by Carbon Footprint Ltd. The same calculating method was used for figures in this value proposition.

CANTEEN 12 DEEP GREEN ULTRA

 UP TO 7 USERS

TYPE	ROAD TOWABLE - EASY AND ECONOMICAL TO TRANSPORT	
AXLE RATING	SINGLE AXLE - 2500KG. EASY TO MANOEUVRE ON SITE	
DEPLOYMENT	ELECTRIC HYDRAULIC DEPLOYMENT WITH 4 RAMS	
TOW HITCH	BALL HITCH. ANTI-VANDAL FLAP COVER WITH BEAR-CLAW LOCK	
GENERATOR	REDBOX 2.3 kVA ENGINE: Yanmar L48 ALTERNATOR: Mecc Alte E516WHD-75 SERVICE INTERVAL: 250 hours.	
ELECTRICS	DEEP GREEN ULTRA SOLARFLOW™ ELECTRICAL SPECIFICATION WITH :	
	4 x 315W roof-mounted solar panels	6 x 315W wall-mounted vertical solar panels
	5.12kW/h lithium ion battery	Hands-free low power electric hand dryers
	Automatic PIR-sensor controlled start/stop function	Interior and exterior PIR-sensor 24V LED lighting
	24V USB charging power outlets	500W 230V 3-pin sockets
HEATING	ULTRA LOW CONSUMPTION 24V AIR-BLOWN HEATER USES 0.25L PER HOUR. HVO OR WHITE DIESEL POWERED	
TELEMETRY	SOLARTRACK™ VRM SYSTEM MONITORS LOCATION, BATTERY, ENERGY PRODUCTION/CONSUMPTION, WASTE, WATER, FUEL TANKS. SET ALARMS, AMEND PARAMETERS AND CREATE REPORTS REMOTELY.	
WASTE MANAGEMENT SYSTEM	WM PRO™ – PATENTED RAIN HARVESTING AND GREY WATER RECYCLING	
TOILET TYPE	FRESH WATER MICRO FLUSH. SINGLE TOILET AND FULL DRYING/CHANGING ROOM	



TRANSFORMING
OUR FUTURE

enquiries@groundshore.co.uk

+44 (0)333 5779111

TOTAL ANNUAL SAVINGS



£8,420

Total savings



£4,644

Direct fuel costs avoided



2,160L

Total litres fuel saved



£1,436

Generator service costs saved



6,841kg

CO2 emissions avoided



£2,340

Toilet servicing costs avoided

*Compared to standard comparable 'eco' Canteen unit with fresh water toilet(s) and 7kVA generator 5 day/week. CO2 emissions calculation: 1l of fuel = 3.16 kg of CO2 (inc. Scope 3). HVO biofuel - £2.15l. Generator service £280. Toilet service £70.

Attribute	Measurement
Unit Length	3650mm
Unit Width	2300mm
Unit Height	2630mm
Towing length	4775mm
Towing Height	2900mm
Net weight	2211kg
Fresh Water Tank	165 litres
Waste Tank	230 litres
Fuel Tank	50 litres



*Fuel, CO2 emission and servicing savings tested and verified on a 24ft Deep Green Canteen Office cabin by Carbon Footprint Ltd. The same calculating method was used for figures in this value proposition.